



Ford Mustang S550 DSC Controller Install



Congratulations on your purchase of the DSC Sport Controller for your Ford Mustang!

The following instructions will assist you through your installation process. Please read them first BEFORE beginning the install and familiarize yourself with the steps and tools needed. If you feel that you cannot properly perform this installation, we HIGHLY recommend you take the vehicle to a qualified and experienced automotive technician.

Parts List

- DSC Sport Controller
- Optional S550 Bracket
- Optional USB Tuning Cable

Tools Needed

- 13mm Socket
- Socket Wrench
- 3mm Allen Key
- Pliers
- Pry tool



Removal of Stock Module

1. The factory suspension module is located in the rear passenger side panel behind the carpet. The car shown is equipped with an optional subwoofer



2. Remove the cargo area carpet panel by simply lifting and pulling it towards you.



3. Remove the three 13mm bolts on the subwoofer (if equipped)



4. Slide the subwoofer slightly and disconnect the green connector behind it



5. Remove the Subwoofer from the car



6. Remove the two trim screws on rear panel



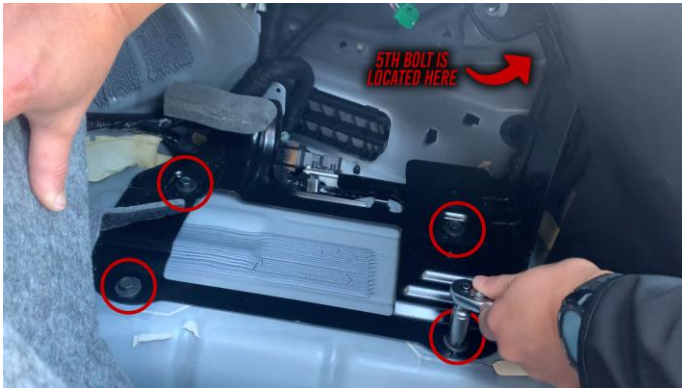
7. Remove the plastic trim rivet on the carpet



8. Pull back the carpet revealing the suspension control module



9. Unbolt the five 13mm Bolts for the subwoofer bracket



10. Remove the subwoofer bracket from the car



11. If the car does not have the factory subwoofer, it will only have three 13mm bolts on the module bracket



12. Pull the entire module assembly towards you to gain access to the harness



13. Pinch the tabs on each side of the harness to release it and begin to pull up slowly



14. As you pull the lever for the harness up, it will release naturally



Installing the DSC Sport Controller

1. Grab your new DSC Controller and optional bracket if purchased



2. Attach controller to bracket by placing the backing plate and allen head bolts on the back of the controller through to the bracket



3. Once assembled it should look like this



4. Now is also a good time to attach the optional tuning cable if purchased



5. When installing the DSC controller back into the car be sure to have the harness running towards the outside of the vehicle



6. Gently place the connector back onto the DSC controller, making sure not to force it (this could result in bent pins)



7. Once aligned, begin to close the lever on the connector. This will draw the two together. There is no need to push



8. Make sure the connector tabs click once fully seated



9. Place the new controller and bracket back into original location



Re-Installing the Factory Pieces

1. We need to first modify the subwoofer bracket by straightening this tab



2. Take a pair of plies and just bend the tab out so it is straight



3. Once this is done, we can place the bracket back in the car



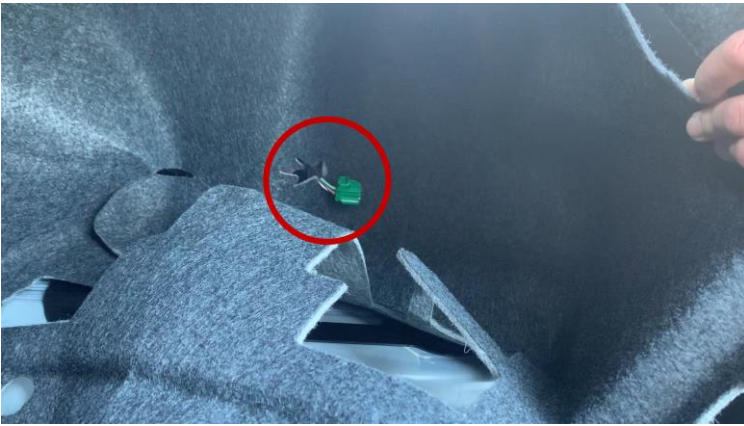
4. Tighten down the five 13mm bolts for the subwoofer and controller bracket (only reinstall the two bolts on the controller bracket if no subwoofer is equipped)



5. Pull the carpet back into place



6. Be sure to pull the green subwoofer connector through if equipped



7. Install the two screws back on the rear trim panel



8. Slide the Subwoofer back into place



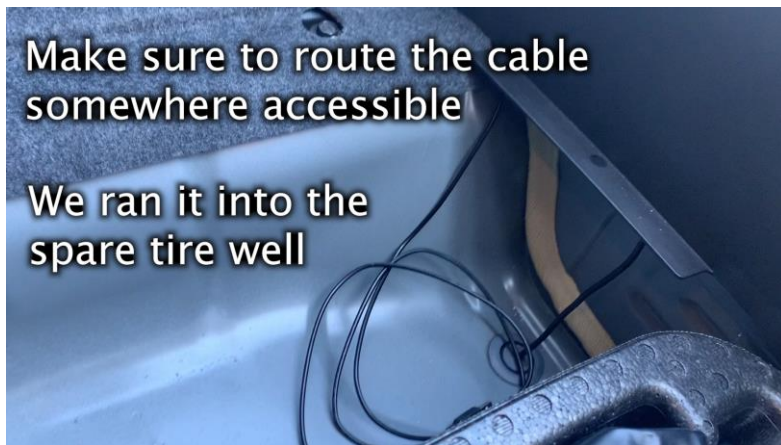
9. Tighten down the three 13mm bolts on the front of the subwoofer



10. Reinstall the plastic rivet for the carpet



11. Be sure to run the tuning cable somewhere easily accessible in the future



12. Reinstall the trunk carpet panel back into place



9. Done! Enjoy your new DSC Sport Controller

DSC Sport Links

Tuning Software: <https://www.dscsport.com/software-2/>

FAQ: <https://www.dscsport.com/frequently-asked-questions/>

Warranty Info: <https://www.dscsport.com/warranty/>

